

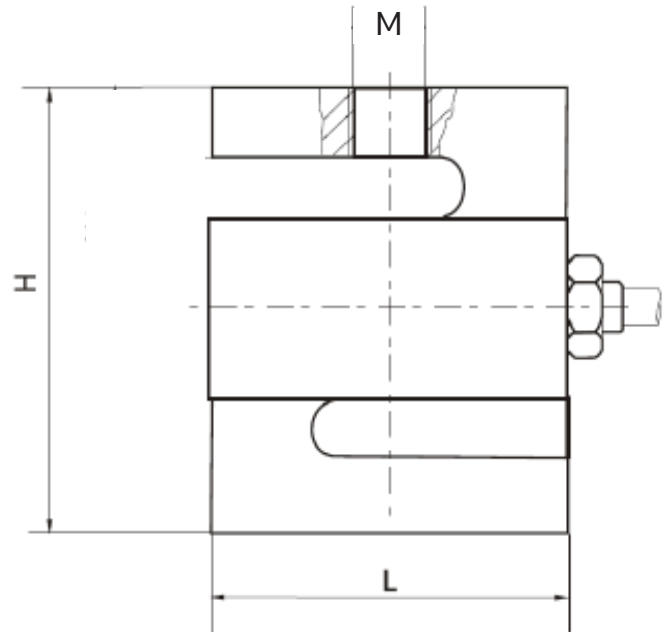
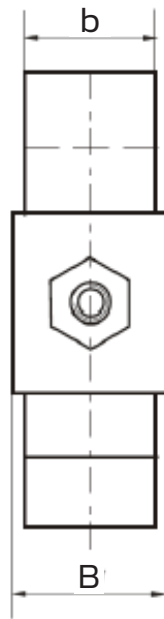
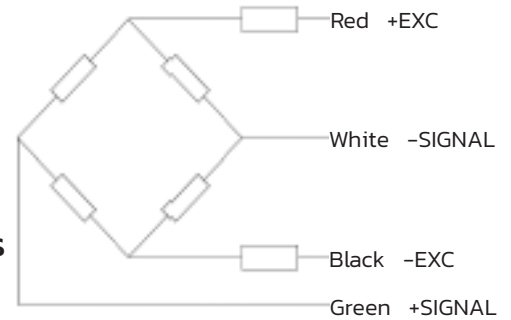
NUWEIGH

LOAD CELLS H3F & H3G



FEATURES

- Tension Load Cell
- Alloy Steel
- Nickel-plated
- Adhesive-sealed
- Hopper Scales
- Hanging Scales
- Other Weighing Devices
- Heavy Duty Design



	LOAD CELL	INV NO.
H3F	H3F 100kg	#1595
	H3F 250kg	#1598
	H3F 1000kg	#1596
	H3F 2000kg	#1599
	H3F 2000lb	#2056
H3G	H3G 2500kg	#4627
	H3G 5000kg	#4258

CAPACITY (kg)	SIZE (mm)				
	L	H	b	B	M
100kg	50.8	76.2	19.0	20.6	M10
250-750kg	50.8	76.2	19.0	20.6	M12
1000kg, 1500kg	50.8	76.2	25.4	27	M12
2000kg	76.2	108	25.4	27	M18 x 1.5
2500kg - 5000kg	76.2	108	25.4	27	M20 x 1.5

NUWEIGH

LOAD CELLS H3F & H3G

SPECIFICATIONS

Capacity	kg	100, 250, 500, 750, 1,000, 1,500, 2,000, 2,500, 5,000
Combined Error	%FS	0.02
Rated Output	mV/V	3.0 ± 0.008
Non-linearity	%FS	0.02
Hysteresis	%FS	0.02
Non-repeatability	%FS	0.01
Creep (%FS/30min/-10°C~+40°C)		0.02
Input Resistance	Ω	350 ± 3.5
Output Resistance	Ω	350 ± 3.5
Insulation Resistance	MΩ	≥5000 (50VDC)
Zero Balance	%FS	1.0
Temperature effect on span	%FS/10°C	0.014
Temperature effect on zero	%FS/10°C	0.018
Temperature, compensated	°C	-10 ~ +40
Temperature, operating	°C	-35 ~ +65
Excitation, recommended	V	9 ~ 12(DC)
Excitation, permitted	V	5 ~ 18(DC)
Safe Overload	%FS	120
Ultimate Overload	%FS	150
Protection Class		IP66
Cable Length	m	6 Four-wire shield cable Ø 5mm