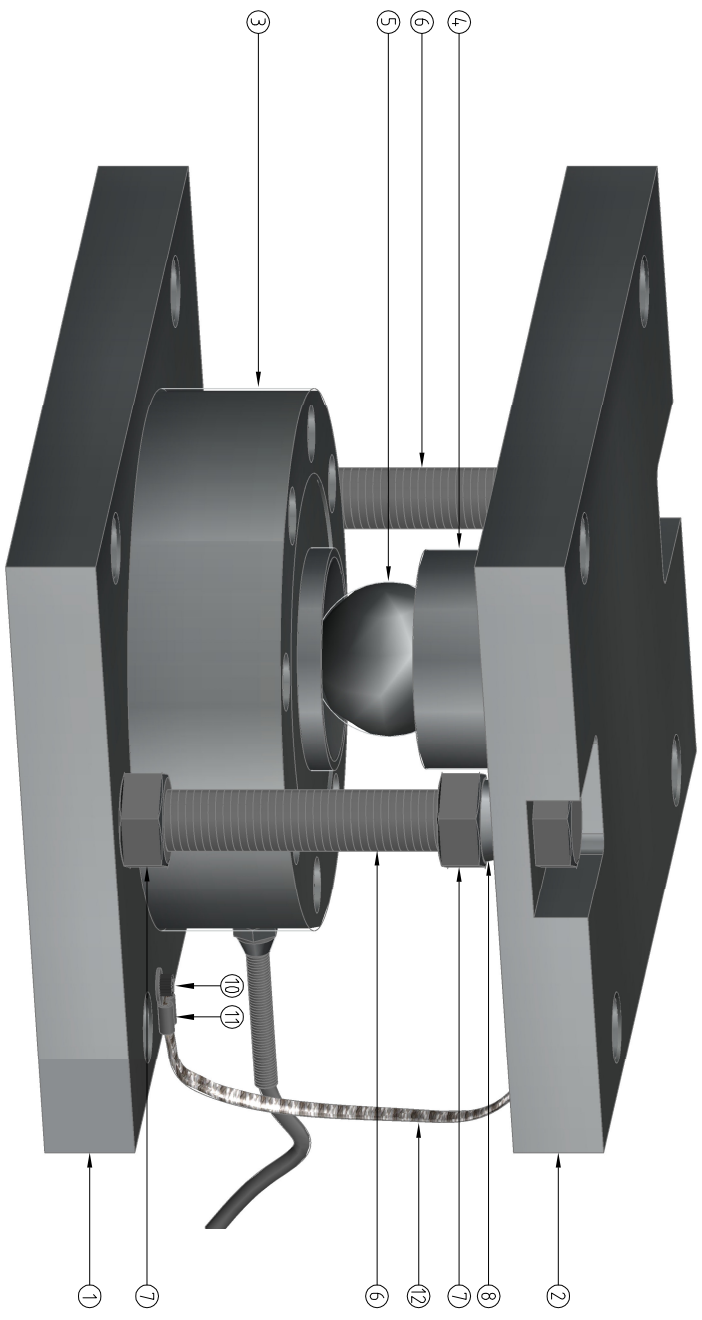
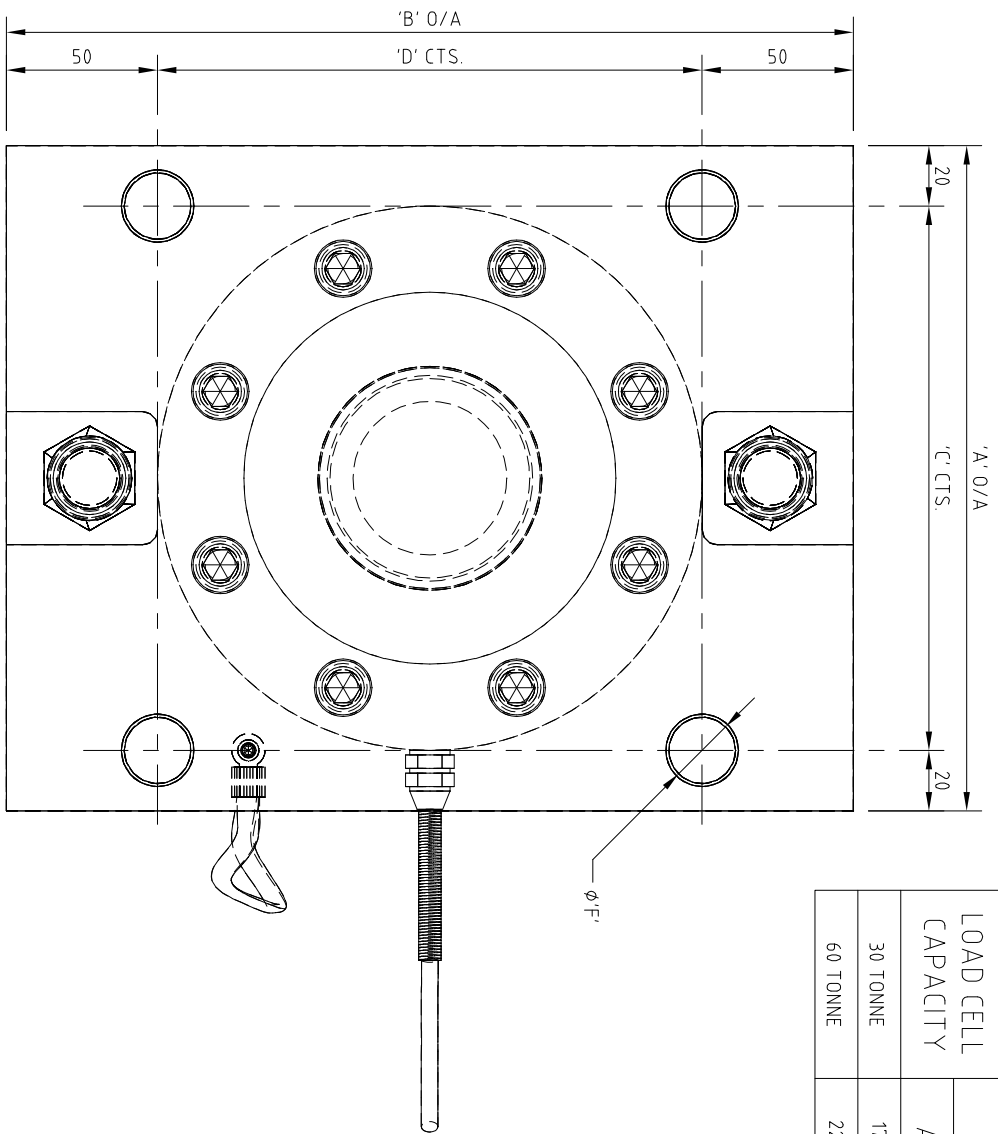
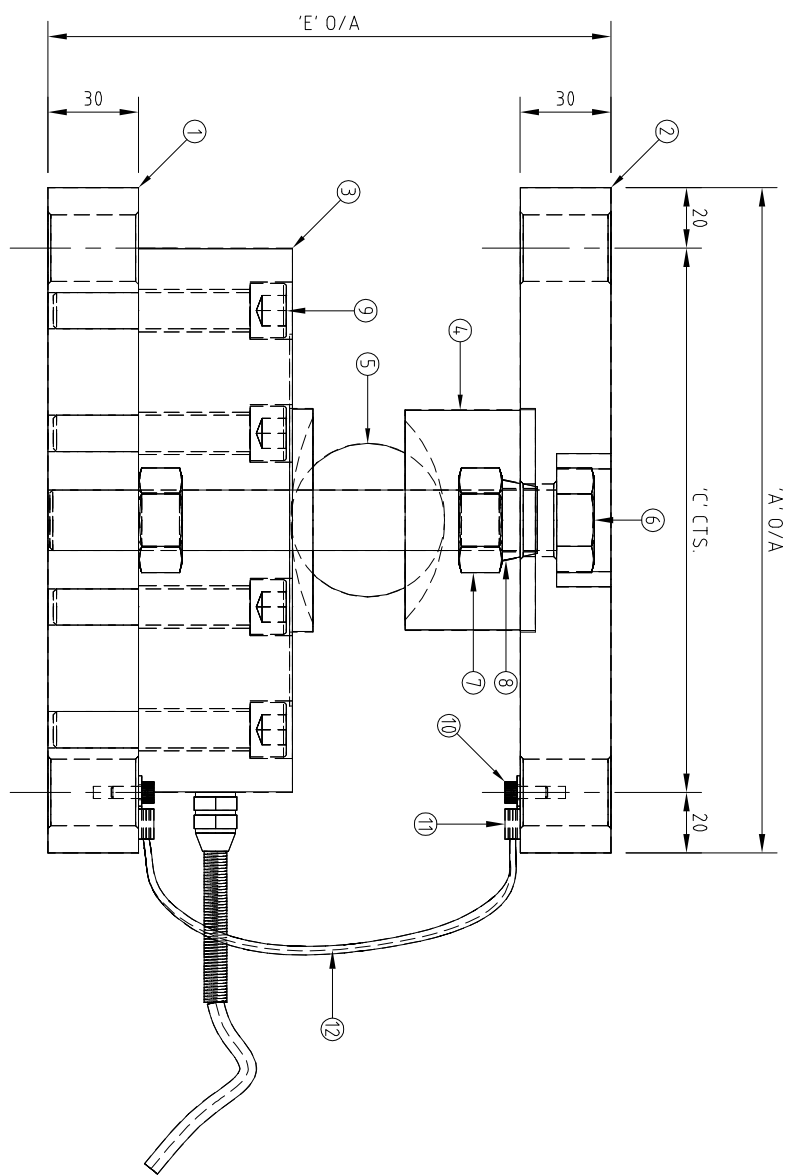


LOAD CELL CAPACITY	DIMENSIONS (mm)					
	A	B	C	D	E	F
30 TONNE	170	230	133	133	165	17
60 TONNE	220	280	180	180	186	22



NOTE: THE CONE (ITEM 8) IS USED FOR INSTALLATION OF THE LOAD CELL MOUNT. AFTER INSTALLATION IS COMPLETE THE CONE AND LOCKING NUT IS WOUND DOWN

- NOTES:
1. THE DWP1979-HC LOAD CELL MOUNT PROVIDES SUPPORT IN THE VERTICAL LOADED DIRECTION ONLY TO THE UNIT BEING WEIGHED. THE DESIGN AND PROVISION FOR ALL OTHER "IN SERVICE" LOADING IMPOSED ON THE UNIT BEING WEIGHED AND ITS STRUCTURAL INTEGRITY SHALL BE BY A SUITABLY QUALIFIED ENGINEER.
  2. USE ONLY THE NUWEIGH AUSTRALIA INSTALLATION PROCEDURE DWP1979-HC FOR CORRECT INSTALLATION.



**MATERIAL LIST**

ITEM	QTY.	DESCRIPTION
1	1	30 TONNE UNIT
2	1	60 TONNE UNIT
3	1	BASE PLATE
4	1	TOP PLATE
5	1	LOAD CELL
6	2	UPPER LOAD CUP
7	4	LOAD BALL
8	2	LOCATING BOLTS - M20 x 160 LG.
9	8	LOCATING BOLTS - M20 x 180 LG.
10	2	NUT - M20
11	2	CONE
12	1	BOLT - M8 UNBRAKO
		BOLT - M4 UNBRAKO
		BOLT - M12 UNBRAKO
		RING TERMINAL - M4
		EARTHING WIRE



COPYRIGHT NUWEIGH SERVICES PTY. LTD.  
WICKHAM, NSW, AUSTRALIA. NO PART OF THIS DRAWING MAY BE REPRODUCED WITHOUT PERMISSION

TITLE  
DWP1979-HC  
GENERAL ARRANGEMENT

DRAWN	J.C.	DRG. No.	8099-DWP1979-HC	SCALE	N.T.S.	REVISION	
CHECKED	MS.						
ENG. MGR.							
APPR'D							

A3